

6036SGWP – EVERYDAY TUB/SHOWERS

60 x 34 ½ x 76 ½ inches

SOAKER MODEL #6036SG

WHIRLPOOL MODEL #6036SGWP

SUPERCORE TUB-SHOWER #6036SGSC



FEATURES

- Tub-shower
- Smooth wall finish
- Ergonomic backrest
- Installed acrylic grab bar
- Molded toiletry shelf
- Slip-resistant textured bottom
- Left or right hand drain
- AcrylX™ applied acrylic surface
- Lifetime limited warranty

Whirlpool Features:

- 6 directional hydrotherapy jets
- Color matched or clear trim
- Pneumatic on/off control
- Advanced safety suction system

OPTIONS

- Designer drain, waste & overflow
- Shower Door Series L0516

AQUATIC ADVANTAGE

- National distribution
- 6 manufacturing facilities
- Private fleet
- Centralized customer service
- Field support

COLOR AND TRIM OPTIONS

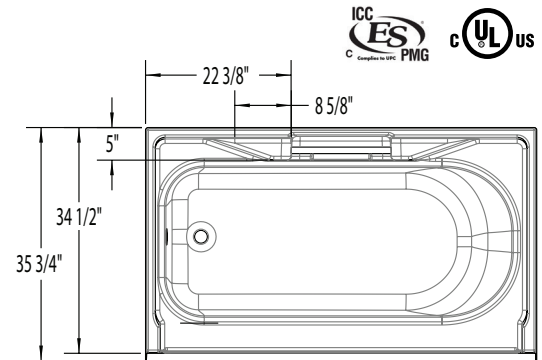
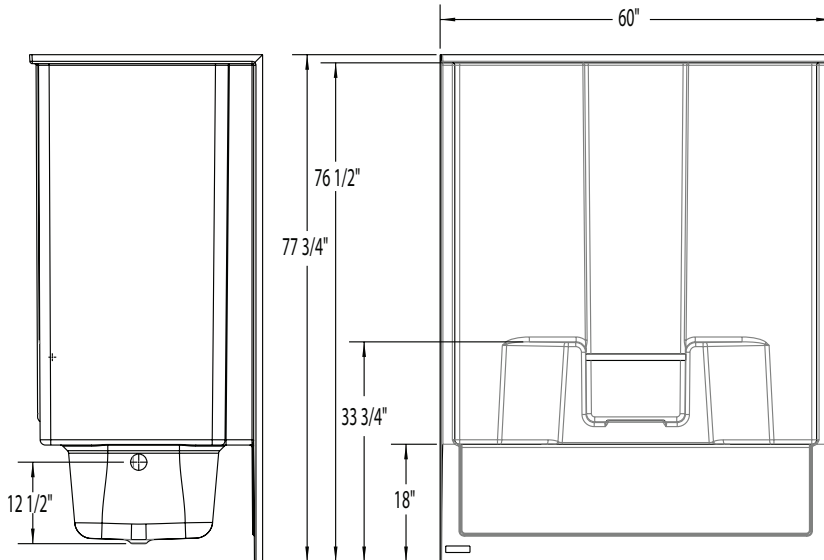
Stock	Upgraded	Premium
Almond (C) White (C)	Linen/Biscuit (C) Bone (C)	Black (NA) Mexican Sand (NA) Sand Bar (NA) Sterling Silver (NA)

C = color matched trim NA = not applicable* color not available for whirlpool models



6036SGWP

60 x 34 1/2 x 76 1/2
inches



FEATURES

lbs Dimensional Tolerance $\pm \frac{3}{16}$ ". Dimensions needed for site preparation should be measured from the unit. Aquatic assumes no responsibility for preparatory work.

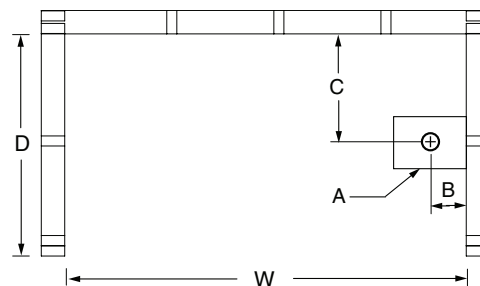
Model #	Material	Wall Finish	Jets	Motor	Controls	Drain	Net Wt.	Pkg. Wt.
Soaker #6036SG	AcrylX™	Smooth	0	—	—	LH or RH	128	133
Whirlpool #6036SGWP	AcrylX™	Smooth	6	63 GPM	Pneumatic	LH or RH	178	183

DIMENSIONS

Specifications	inches
Width: Overall / Net	60
Depth: Overall / Net	35 3/4 / 34 1/2
Height: Overall / Net	77 3/4 / 76 1/2
Enclosure Opening	55 1/2
Skirt Height	18
Drain Rough-In (from Back Wall)	16 3/4
Drain Rough-In (from Side Wall)	2 3/16
Drain: Diameter / Clearance	2 / 2 3/4

FRAMING DIMENSIONS

Type	D Depth	W Width	H Height	A	B	C
Alcove	35 3/4	60 1/8	—	Box Out	2 3/16	16 3/4



SUMP DATA

Top of Drain to Bottom of Overflow	Capacity to Overflow gal	Min. Operating Capacity gal	WIDTH @ centerline		DEPTH @ centerline	
			Top	Bottom	Top	Bottom
10 1/2	40	35	53 1/4	46	22 3/4	21